

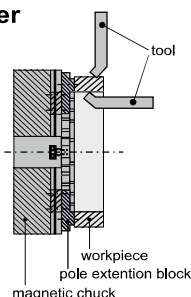
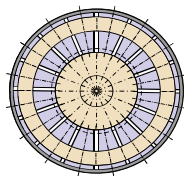
## 46 SERIES **UL - 821**

## "ULTRA" BRAND ELECTROPERM MAGNETIC ROUND CHUCK FOR TURNING

### APPLICATION -



**Continues Power  
Not Required.**



1. Use in vertical and horizontal turning of Plates.
2. Radially movable location blocks will help to position and secure work pieces. For Heavy Turning
3. Double magnet is available for heavy duty operations on seamless rolled rings, turning flanges and machining plates.
4. Continues electrical power supply is not required.

**ID, OD and face machining in one setup**

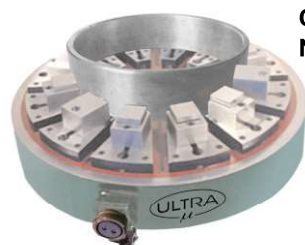
### FEATURE -

1. ID, OD & Face Machining In One Setup which no other work-holder will provide.
2. Detachable Bayonet Plug for power supply.
3. Poles Individually Magnetized for full loading power. Also Simple Pole Extensions allows tool clearance for rings.
4. Assembled with power full magnets. So heavy cuts can be taken.
5. Setup is easy & downtime for different work pieces will be minimal.
6. Clamp force is consistent & predictable. Work holder does not distort the work piece.
7. Un clamping is on the tip of a button, which increases productivity.
8. No Heat is generated by integrating coil when magnet is activated, as power supply is disconnected during machining being Electro Perm Magnetism.

Sr. No.	Cat No.	Size (mm)
1.	UL - 82101	Ø 300 x 100 H
2.	UL - 82102	Ø 450 x 100 H
3.	UL - 82103	Ø 500 x 100 H
4.	UL - 82104	Ø 600 x 100 H
5.	UL - 82105	Ø 800 x 100 H
6.	UL - 82106	Ø 1000 x 100 H
7.	UL - 82107	Ø 1250 x 100 H
8.	UL - 82108	Ø 1500 x 100 H
9.	“ULTRA” VARIABLE CONTROL UNIT FOR ABOVE CHUCKS ON REQUEST	
10.	“ULTRA” EXTENSION BLOCK ON REQUEST	
11.	“ULTRA” EXTENSION JAWS ON REQUEST (Movebal)	

## 47 SERIES **UL - 815**

## "ULTRA" BRAND ELECTROPERM MAGNETIC ROUND CHUCK FOR GRINDING



**Continues Power  
Not Required.**



### FEATURE -

1. Continuous Electricity is not required. 100% safe in used.
2. Power for all poles transferred to ring / plates to hold the job firmly.
3. Assembled with power full magnets. So heavy cut can taken
4. Poles individually magnetized for full loading power

### APPLICATION -

1. Use in vertical and horizontal grinding Machine.
2. Radially movable location blocks will help to position and secure work pieces. This is also necessary for wheel clearance

Sr. No.	Cat No.	Size (mm)	
1.	UL - 81501	Ø 300 x 100 H	
2.	UL - 81502	Ø 450 x 100 H	
3.	UL - 81503	Ø 500 x 100 H	
4.	UL - 81504	Ø 600 x 100 H	
5.	UL - 81505	Ø 800 x 100 H	
6.	UL - 81506	Ø 1000x 100 H	
7.	UL - 81507	Ø 1250x 115 H	
8.	UL - 81508	Ø 1500x 115 H	
9.	“ULTRA” VARIABLE CONTROL UNIT FOR ABOVE CHUCKS		ON REQUEST
10.	“ULTRA” EXTENSION BLOCK		ON REQUEST
11.	“ULTRA” EXTENSION JAWS (Movebal)		ON REQUEST